

OWNER'S MANUAL

PLEASE READ AND FOLLOW ALL INSTRUCTIONS



TABLE OF CONTENTS

Important Safety Instructions and Warnings

Preparing for Your New Swim Spa

Operating Your Swim Spa

Cleaning and Maintenance

Sound System

Pre-Delivery Checklist

Planning the Best Location

Clearance for Service Access

Opening the Front Door Panel for Electrical Hookup

Filling and Powering Up Your Swim Spa

Priming the Pump

Swim Spa Control Panel

Jets

LED Lighting

Diverter Knobs

Air Valve

Waterfalls

Removing and Reseating the Pillows

Jet Removal and Replacement

Draining Your Swim Spa

Cleaning and Replacing the Filter

Swim Spa Cover and Locking System Installation

Vacation Care

Cleaning Your Swim Spa

Using the Bluetooth Sound System

1

3

11

14

20

TABLE OF CONTENTS

Water Clarity

Appendix

Basic Troubleshooting

Limited Warranty

21

22



Danger! Proceed with extreme caution to prevent the risk of severe injury and/or death.



Warning! Proceed with care to prevent avoidable accidents and potential risks.

NOTE

Because different control systems have different features and options, this booklet is not intended to give specific details of the control system that is in your swim spa. For specific instructions on how to operate and program your swim spa and it's control system, please refer to the applicable control operation manual that was included with your swim spa.

(C) 2022, Swim Spas. All rights reserved

READ AND FOLLOW ALL INSTRUCTIONS.

DANGER -- Risk of accidental drowning:

Do not allow children to be in or around a swim spa unless a responsible adult supervises them. Keep the swim spa cover on and locked when not in use. See instructions enclosed with your cover for locking procedures.

DANGER -- Risk of injury:

The suction fittings in this swim spa are sized to match the specific water flow created by the pump. Should the need arise to replace the suction fittings, or the pump, be sure the flow rates are compatible.

Never operate the swim spa if the suction fitting or filter baskets are broken or missing. Never replace a suction fitting with one that is rated less than the flow rate marked on the original suction fitting.

DANGER -- Risk of electric shock:

Install the swim spa at least 5 feet (1.5 meters) from all metal surfaces. As an alternative, a swim spa may be installed within 5 feet of metal surfaces if each metal surface is permanently bonded by a minimum #8 AWG solid copper conductor to the outside of the swim spa's control box.

Do not permit any external electrical appliances, such as lights, telephones, radios, televisions, and etc., within five feet (1.5 meters) of the swim spa. Never attempt to operate any electrical device from inside the swim spa.

Replace a damaged power cord immediately.

Do not bury the power cord.

Connect to a grounded, grounding-type receptacle only.

WARNING -- To reduce the risk of injury:

The swim spa water should never exceed 104°F (40°C). Water temperatures between 100°F (38°C) and 104°F (40°C) are considered safe for a healthy adult. Lower water temperatures are recommended for young children and when swim spa use exceeds 10 minutes.

High water temperatures have a high potential for causing fetal damage during pregnancy. Women who are pregnant, or who think they are pregnant, should always check with their physician prior to swim spa usage.

The use of alcohol, drugs or medication before or during swim spa use may lead to unconsciousness, with the possibility of drowning.

Persons suffering from obesity, a medical history of heart disease, low or high blood pressure, circulatory system problems or diabetes should consult a physician before using the swim spa.

Persons using medications should consult a physician before using the swim spa since some medications may induce drowsiness while others may affect heart rate, blood pressure and circulation.

HYPERTHERMIA DANGER:

Prolonged exposure to hot air or water can in 4°C above 37°C). While hyperthermia has many health benefits, it is important not to allow your body's core temperature to rise above 103°F (39.5°C).

Symptoms of excessive hyperthermia include dizziness, lethargy, drowsiness and fainting. The effects of excessive hyperthermia may include:

- Failure to perceive heat
- Failure to recognize the need to exit swim spa or hot tub
- Unawareness of impending hazard
- Fetal damage in pregnant women
- Physical inability to exit the swim spa
- Unconsciousness

WARNING: The use of alcohol, drugs, or medication can greatly increase the risk of fatal hyperthermia.

WARNING: People with infectious diseases should not use a swim spa or hot tub.

WARNING: To avoid injury, exercise care when entering or exiting the swim spa or hot tub.

WARNING: Do not use drugs or alcohol before or during the use of a swim spa or hot tub to avoid unconsciousness and possible drowning.

WARNING: Do not use a swim spa or hot tub immediately following strenuous exercise.

WARNING: Prolonged immersion in a swim spa or hot tub may be injurious to your health.

CAUTION: Maintain water chemistry in accordance with manufacturer's instructions.

* Please read the instructions carefully and use according to the instructions. Children should use this product under the close supervision of adults.

Pre-Delivery Checklist

Most cities and counties require permits for exterior construction and electrical circuits. In addition, some communities have codes requiring residential barriers such as fencing and/or self-closing gates on property to prevent unsupervised access to the property by children. Your dealer can provide information on which permits may be required and how to obtain them prior to the delivery of your swim spa.

Before Delivery
Plan your delivery route
Choose a suitable location for the swim spa
Lay a 5 - 8 cm concrete slab
Install dedicated electrical supply
After Delivery
Place swim spa on slab
Connect electrical components

* Check swim spa and register serial number.



Planning the Best Location

Safety First
Do not place your swim spa within 10 feet (3 m) of overhead power lines.

Consider How You Will Use Your Swim Spa
How you intend to use your swim spa will help you determine where you should position it. For example, will you use your swim spa for recreational or therapeutic purposes? If your swim spa is mainly used for family recreation, be sure to leave plenty of room around it for activity. If you will use it for relaxation and therapy, you will probably want to create a specific mood around it.

Plan for Your Environment
If you live in a region where it snows in the winter or rains frequently, place the swim spa near a house entry. By doing this, you will have a place to change clothes and not be uncomfortable.

Consider Your Privacy
In a cold-weather climate, bare trees won't provide much privacy. Think of your swim spa's surroundings during all seasons to determine your best privacy options. Consider the view of your neighbors as well when you plan the location of your swim spa.

Provide a View with Your Swim Spa
Think about the direction you will be facing when sitting in your swim spa. Do you have a special landscaped area in your yard that you find enjoyable? Perhaps there is an area that catches a soothing breeze during the day or a lovely sunset in the evening.

Keep Your Swim Spa Clean
In planning your swim spa's location, consider a location where the path to and from the house can be kept clean and free of debris. Prevent dirt and contaminants from being tracked into your swim spa by placing a foot mat at the swim spa's entrance where the bathers can clean their feet before entering your swim spa.

Clearance for Service Access

While you are planning where to locate your swim spa, you need to determine how much access you will need for service. All swim spa models require a minimum of three feet / one meter access to all sides of the swim spa for potential service. For this reason, the swim spa should never be placed in a manner where any side is permanently blocked. Examples include placing the swim spa against a building, structural posts or columns, or a fence. Swim Spa models require access to all sides in case they need service or repair. See the figure below. If you are planning to enclose or surround your swim spa with a deck, make sure there is easy access for service or repair.

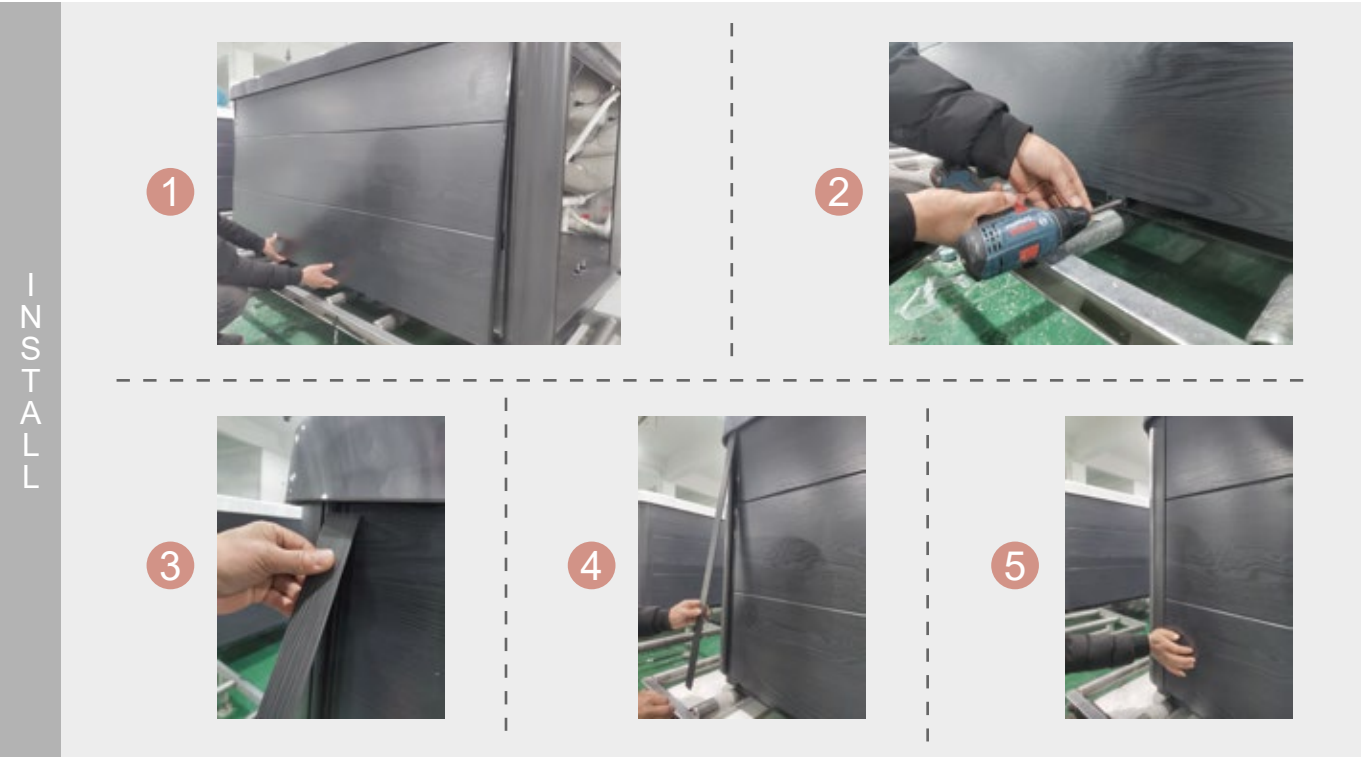
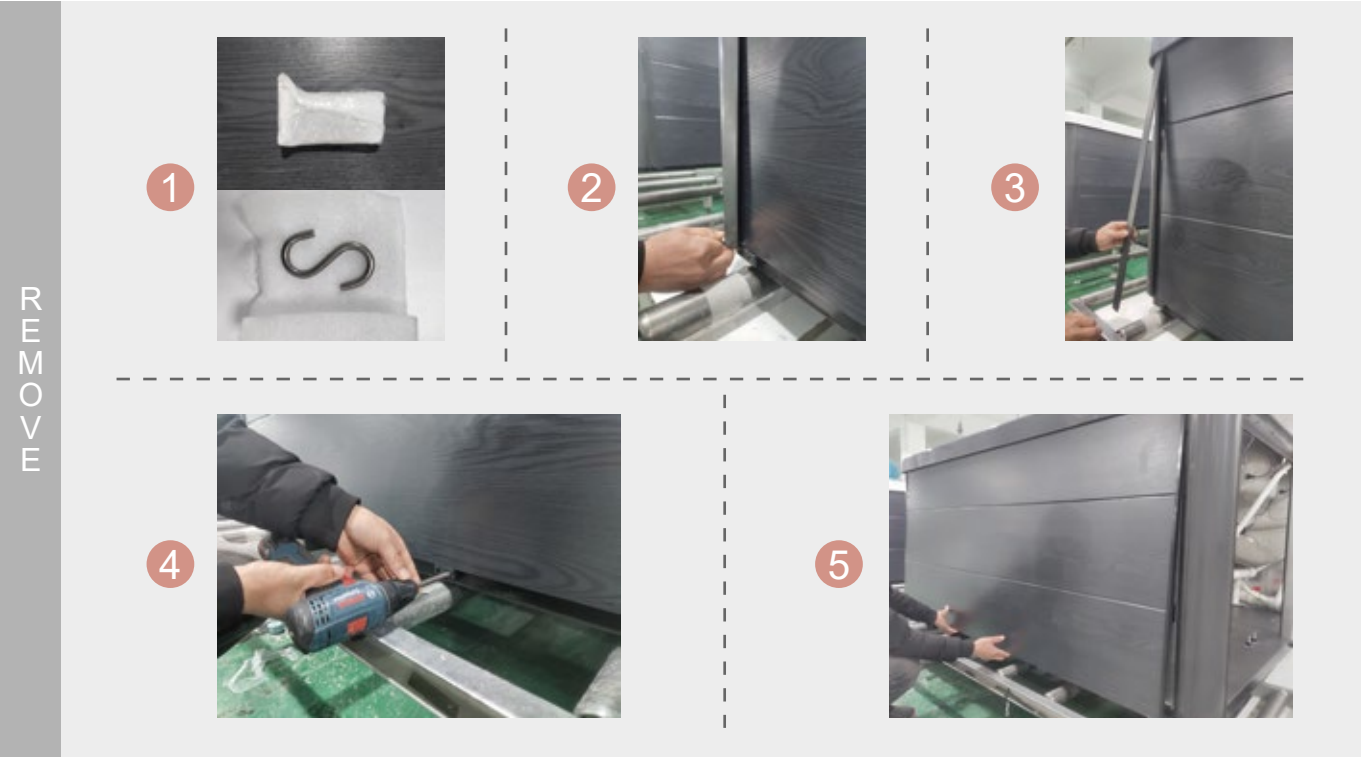
Swim Spas require clearance on all sides of the swim spa.



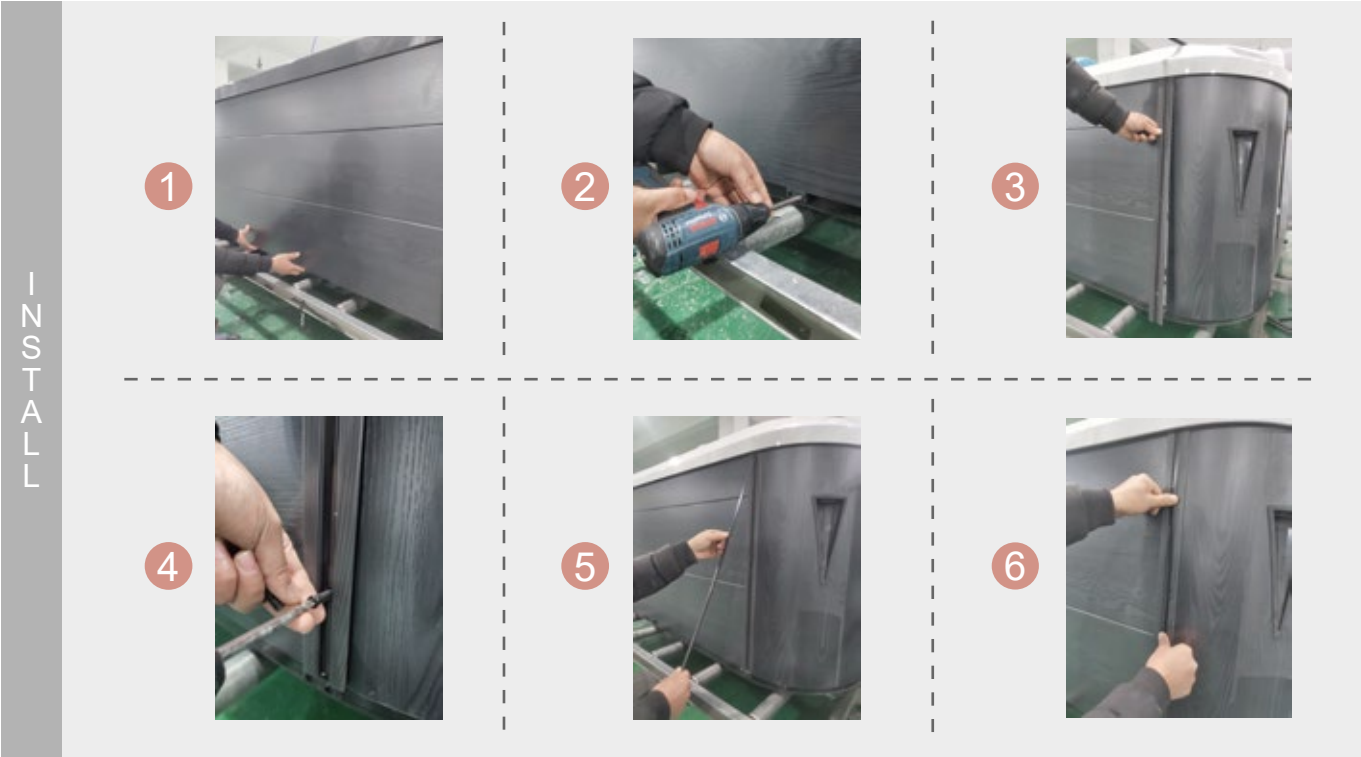
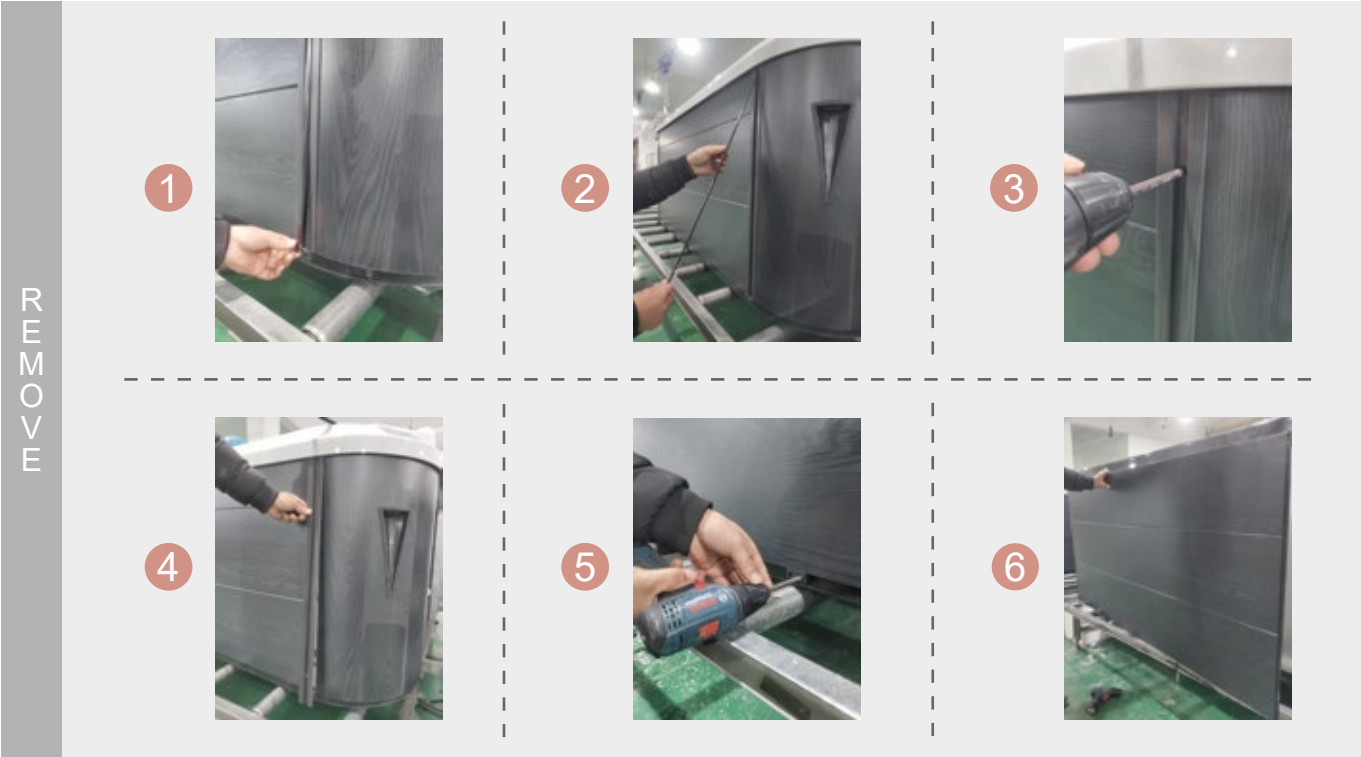
Opening the Front Door Panel for Electrical Hookup

The following electrical connections must be performed by a licensed electrical contractor. Unscrew and remove the two corner panels on each side of the swim spa's front door.

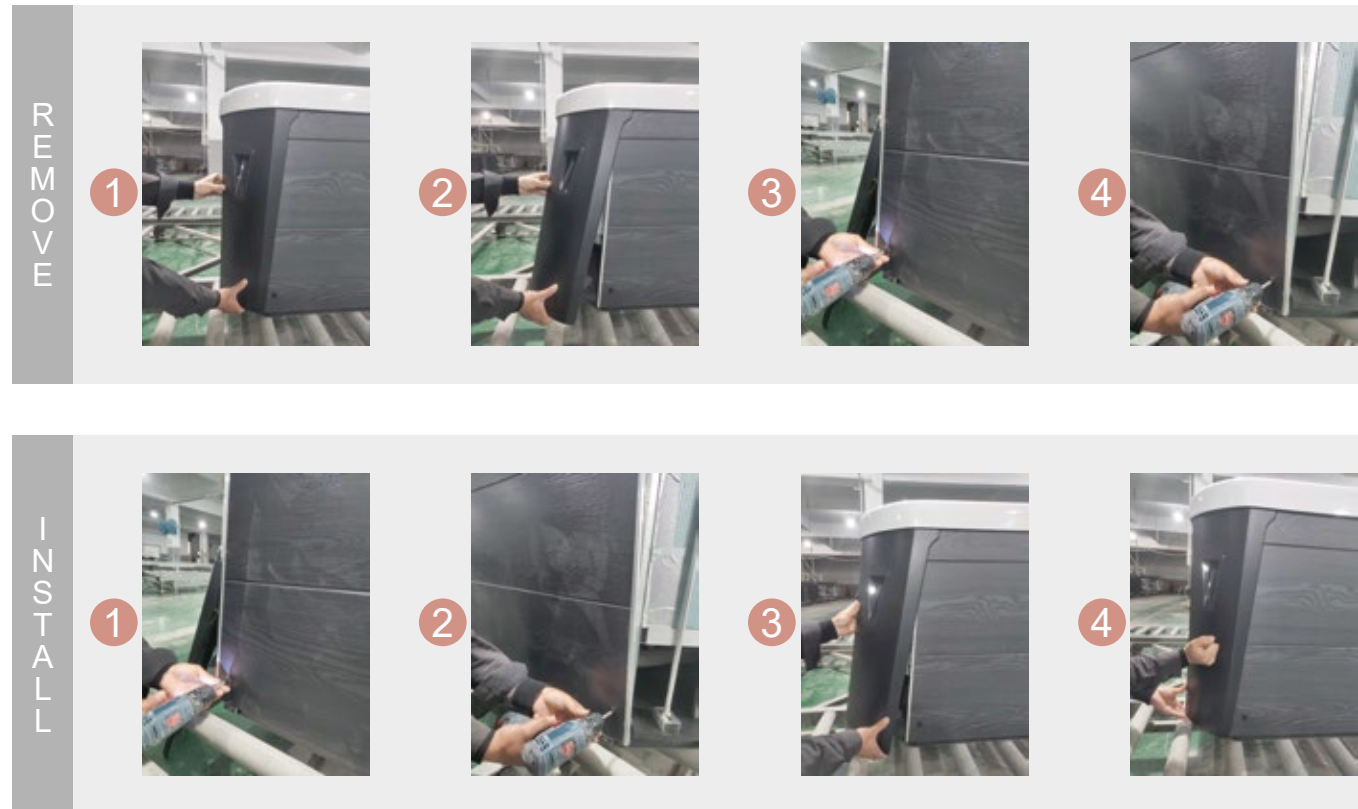
1. The first way to remove and install the skirt.



2. The second way to remove and install the skirt.



3. The third way to remove and install the skirt.



Pictured to the right is the inside of the swim spa behind the front door. The electrician now has access to connect the swim spa for power. While the front door is off, refer to page 7 for instructions on ensuring the plumbing fittings are secure (but do not be tempted to over-torque or over-tighten these fittings).

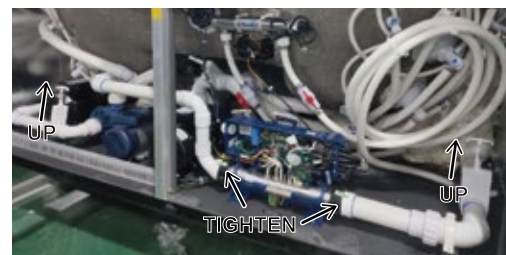


Filling and Powering Up Your Swim Spa

1. Inspect the swim spa equipment.

Inspect all plumbing connections in the equipment area of your swim spa.

- Make sure unions in the equipment pack are tight. (Be careful not to over-tighten the plumbing fittings.)



Never run the swim spa with the gate valves closed or without water circulating for long periods of time.

2. Remove the cartridge from filter canister.

If you have a skimmer like this:

Grip the filter by the handle and unscrew it from the canister. Never try to pull the filter cartridge while the swim spa is running in low or high speed (i.e., any speed).



If you have a skimmer like this:

Remove the black skimmer cap and barrel, grip the filter by the handle and unscrew it from the canister.



Teleweir Mega filter skimmer

- 75 square feet filtration
- Smooth cap

If you have a skimmer like this:

Rotate and remove the black locking ring. Remove the black skimmer cap and barrel, grip the filter by the handle and unscrew it from the canister.

Replace and lock the locking ring and slide the skimmer cap and barrel back in the canister.

Note: The skimmer cap and barrel were locked in place at the factory to prevent damage during shipment. It must be unlocked and replaced in the filter canister so that it can float when the swim spa is filled. If you do not remove the cap and barrel, your swim spa's filtration system will not perform as it was designed to.

Teleweir filter skimmer

- 50 square feet filtration
- Spoked cap



After you remove the filter, remove the plastic wrapper and soak it in water for 30 minutes before you replace it. A dry filter can allow air into the filtration system which can cause the pump to fail to prime.



— Preparing for Your New Swim Spa —

3. Fill the swim spa.

Place a garden hose in the filter canister and fill your swim spa.

Always fill the swim spa through the filter canister. Failure to do so may cause air to be trapped in the filtration system and prevent the pumps from operating properly.



Fill the swim spa until water level is about six inches from the top.

If the water level is too low or too high, your swim spa will not operate properly.



Never fill your swim spa with soft water.

Soft water makes it impossible to maintain the proper water chemistry and may cause the water to foam, which will ultimately harm the finish of the swim spa and void your warranty. You may fill your swim spa with **well water** provided the following conditions are met: 1) Purchase and use a pre-filter to run the well water through on the fillup. The pre-filter will be placed before the swim spa filter in the fill-up flow of water. 2) Have a Total Dissolved Solids (TDS) and metals test performed by a qualified person after the fill-up process but before any swim spa use.

4. Turn on power to the swim spa.

When the swim spa is filled to the correct level, turn on the power at the GFCI breaker.



— Preparing for Your New Swim Spa —

5. Install the filter into the filter canister.



Make sure the filter has soaked at least 30 minutes before you install it. Insert the filter all the way and screw it in. Do not over-torque the cartridge during installation, just hand tighten gently.



6. Adjust water chemistry.

Test and adjust the water chemistry. See the section on page 21 for instructions on keeping your water clear.

7. Let the swim spa heat up.

When the swim spa has finished priming, the heater will activate. Put the cover on and let the swim spa heat to the set temperature.

Priming the Pump

New swim spa owners often have difficulty the first time they start their swim spa and the pump fails to prime. This can be frustrating, but these simple instructions can help you.

Sometimes air can become trapped in the pump while filling the swim spa. You will know this has happened when after you have filled and started the swim spa, the pump does not seem to function. You will hear the pump operating, but no water will be moving.



The pump will not work properly while air is trapped in it.

Continuing to operate the pump in this way will cause damage.

Whenever you fill your swim spa, fill it through the filter canister and make sure all jets are open.



Swim Spa Control Panel

Brand	The name of the panel	Picture	QR code
BALBOA	TP400		
	TP600		
	TP800		
	Spa Touch		
GECKO	IN.K300-10P		
	IN.K300-20P		
	IN.K506		
	IN.K806		
	IN.K1000		
JOYONWAY	PB554		

* Please scan the QR code for information.

Jets

Almost all of the jets in your swim spa are adjustable. Rotating the face of an adjustable jet to the left will decrease the amount of water flow through the jet. Rotating the face of an adjustable jet to the right will increase the amount of water flow through the jet. (See example shown here.) Neck jets adjust in the opposite directions .



LED Lighting

Press the LIGHT button on the topside control panel to turn the swim spa light on. If your swim spa has perimeter LED lights, they will also light up at the same time as the swim spa light.

The LEDs operate in three modes:

1. Cycle: When you continually press the LIGHT button, the LEDs will cycle through the three main LED colors (Red, Green, and Blue) or combinations of the three that produce the following colors: light green, purple, light blue, yellow, etc.

Each time you press the button, you immediately advance to the next color in sequence or eventually a different light pattern.

2. Flashing: When you are cycling through all the colors, the next time you push the LIGHT button, the LED lights may start flashing. This is another normal operational pattern option.

3. Fading cycle: The next phase of operation when you push the LIGHT button is a slow and/or fast fade random transition from one color to the next.

Swim Spas with exterior LED lighting generally work in the same mode as described above. The variations in color and patterns provide you with multiple options to suit almost any lighting preference.

Press the Light key to turn light on. Press the Light key a second time to turn light off.

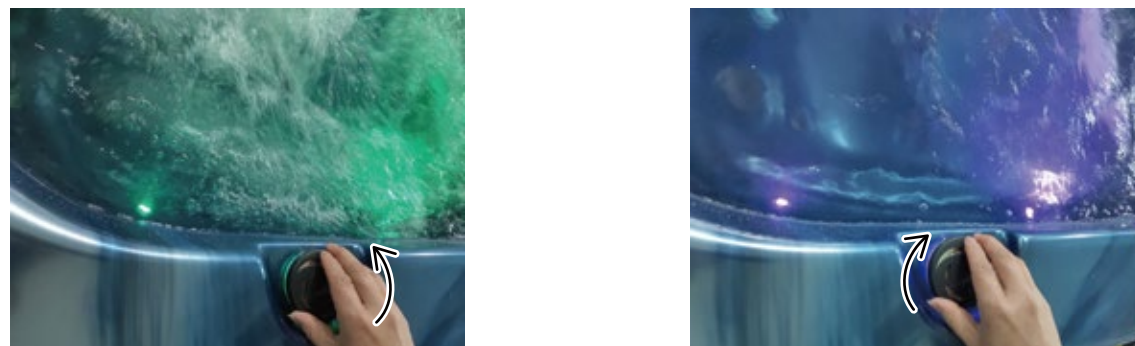
Diverter Knobs

Diverter knobs are the 2" knobs located around the top of your swim spa. They allow you to divert water through jets from one side of the swim spa to the other, or in most cases from floor jets to wall jets. This is accomplished by rotating the diverter knob to the left (counterclockwise), decreasing the amount of water flow through a section of jets. To increase the amount of water flow through the other section of jets, rotate the handle to the right (clockwise).



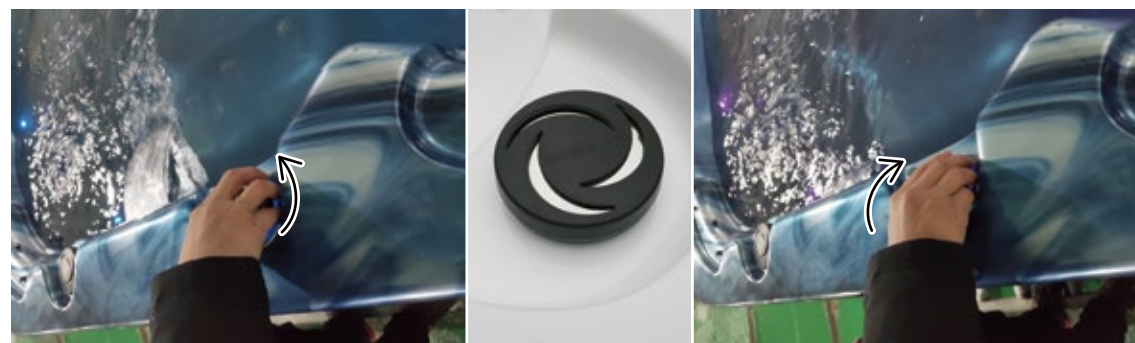
Air Valve

Air venturis are the 1" knobs located around the top of your swim spa. Each one will let you add a mixture of air with the jet pressure. This is accomplished by rotating the air venturi knob to the left (counterclockwise) to increase the amount of airflow through the jets. To decrease the amount of airflow through the jets, rotate the handle to the right (clockwise).



Waterfalls

Some swim spa series include optional waterfalls. When the booster pump is on, rotate the dial on top (for the cascade waterfall) (see below).



Removing and Reseating the Pillows

You can remove the pillows for cleaning and maintenance quickly and easily. This method works for all types of pillows.

Grab the lower edge of the pillow with both hands firmly and pull up. As you do this, the pillow inserts will pop out of the holes.

Reseat the pillows by aligning the pillow inserts with the holes and striking the pillow hard enough to insert the pegs back into the holes.



Jet Removal and Replacement

Screw-in jet removal

Grasp the outer rim of the jet and turn it counterclockwise. The jet will unscrew from the fitting until it is free.

To replace the jet, place it in the fitting and turn it clockwise until it is snug in place and it can be rotated freely about half a turn. Do not over-tighten the jet.



Draining Your Swim Spa

Your swim spa should be drained every four to six months for cleaning and maintenance and refilled with fresh tap water. See page 19 for instructions on cleaning the shell, cover, and pillows. See page 7 for instructions on refilling your swim spa. Before you begin, turn off power to the swim spa at the breaker and remove all filters.

1. Locate your drain.

For swim spas with drain inside the swim spa

Remove the screws to the access panel and open it. Locate hose ending with the 3/4 inch hose-bib fixture as shown below.

For swim spas with cabinet-mounted drain

Pull the knob out of the cabinet. The cabinet drain is screwed into the drain pull knob.

2. Remove the cap.

Make sure the valve is in the closed position, then unscrew and remove the cap. Unscrew the cap.

For swim spas with drain inside the swim spa

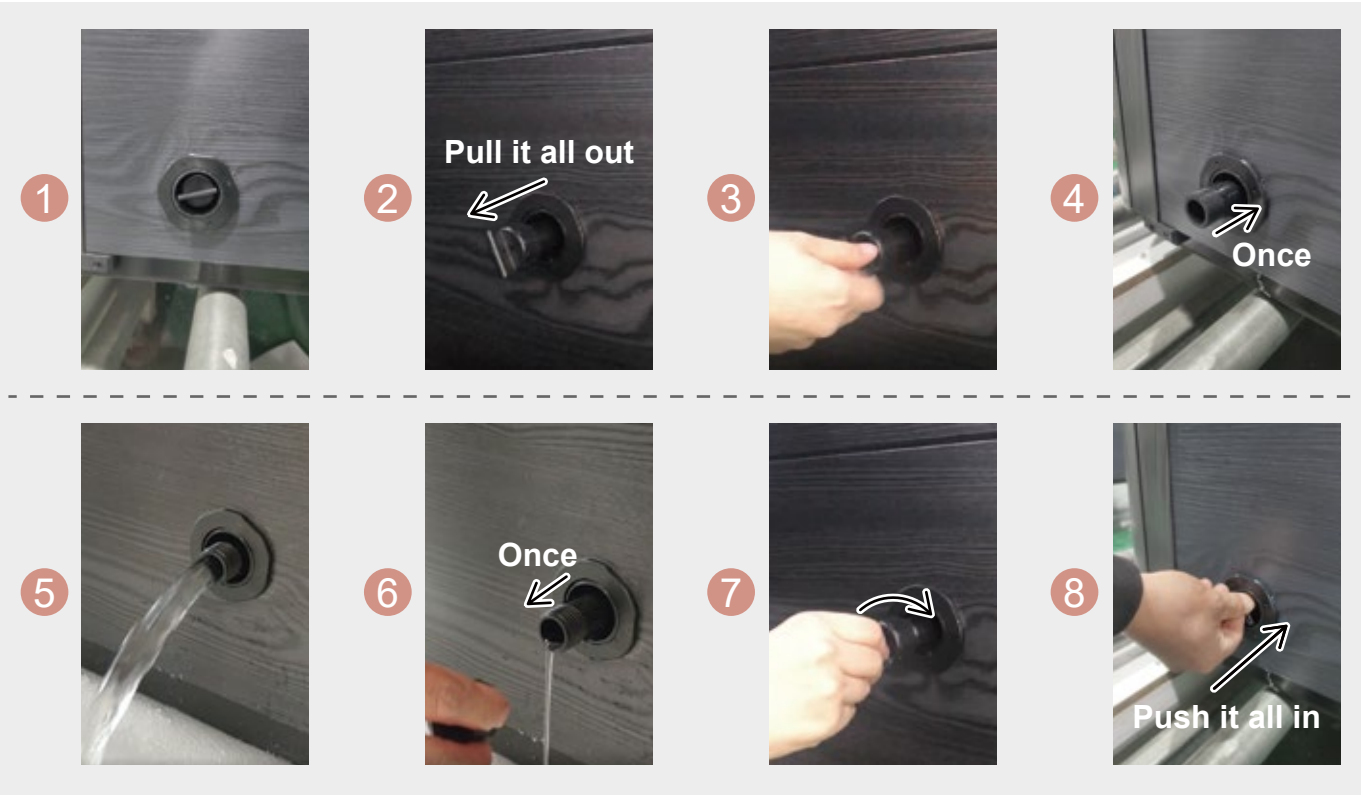
For swim spas with cabinet-mounted drain

3. Connect valve to a garden hose.

Attach a garden hose to the hose-bib fixture. Place the other end of the garden hose where you would like the water to drain.

4. Drain the swim spa.

Turn the valve on the hose-bib fixture to open the drain. When the swim spa has drained completely, turn the valve on the hose-bib fixture, remove garden hose, and replace the cap.



Cleaning and Replacing the Filter

Filtration is one of the most important steps you can take to ensure clean, clear water. It is far less expensive to fix water clarity problems by filtering your swim spa than by using excessive amounts of chemicals, excessive filtration times, or by water replacement.

Set the swim spa in SERENITY MODE before you remove the filter. SERENITY MODE pauses all swim spa operations for service functions like cleaning or replacing the filter. See page 11 for instructions on using SERENITY MODE.

1. Remove the filter by unscrewing it and pulling it up and out.
2. Place the dirty filter into a bucket of water deep enough to cover the filter. Add 8 oz. of liquid filter cleaner to the bucket of water.
Note: It is a good idea to keep a swim spare filter to use in the swim spa while the dirty filter is being deep cleaned. This way, you can rotate the filters and both will last longer.
3. Soak the filter for a minimum of 24 hours.
4. Spray the filter with a water hose. Spray each pleat carefully.
5. Reinstall the filter. Do not overtighten.

Swim Spa Cover and Locking System Installation

Important! Keep the swim spa covered when not in use!

- Covered swim spas will use less electricity in maintaining your set temperature.
- Covering your swim spa will protect your swim spa's finish from the sun's ultraviolet rays.
- You are required to keep the swim spa covered to maintain warranty coverage.
- Covering your swim spa helps prevent children from drowning in the swim spa.

In addition, while the swim spa cover is rigid, it is not designed to support any weight. Therefore, as a safety precaution and to preserve the life of your cover, you must not sit, stand, or lie on it, nor should you place objects of any kind on top of it.

Step 1 - Place cover on swim spa. Make sure it is correctly positioned.



Step 2 - Position the tie-down hardware (attached to the straps of your cover) on the side of the swim spa so they are easily reached by the cover tie-down straps.



Step 3 - With the straps pulled taut (but not overly tight), lightly drill the location for screw placement. Gently drill 3 holesone for each screw slot in the lock. (If you do not have a low torque drill, use the lowest torque setting on the drill you have.) DO NOT drill all the way in but instead just make a guide for starters.



Step 4 - Use a screwdriver to finish screwing in the 3 screws. (Repeat this process for the other 3 corners.)



Step 5 - Keep the cover fastened down at all times when not in use. Locking hardware may be locked with a key (which is provided).



Step 6 - The provided key will allow you to lock down swim spa access.



**WARNING
AVOID
DROWNING
RISK**

FALURE TO FOLLOW INSTRUCTIONS MAY RESULT IN INJURY OR DROWNING
NON-SECURED OR IMPROPERLY SECURED COVERS ARE A HAZARD
REMOVE COVER COMPLETELY BEFORE ENTRY OF BATHERS
ENTRAPMENT POSSIBLE
KEEP COVER ON SWIM SPA AND LOCKED WHEN NOT IN USE

Vacation Care

You can leave your swim spa unattended for up to two weeks if you follow these instructions.

ALWAYS lock your cover using the cover locks if you plan to be away from home and the swim spa is filled with water.

1. Select the Low Range temp choice used for vacation mode.
2. Following the water quality instructions starting on page 21, adjust the pH.
3. Shock the water (add either chlorine or bromine sanitizer).
4. When you return, check and adjust the pH and shock the water.

If you will not be using your swim spa for longer than 14 days and a swim spa maintenance service is not available, we strongly recommend you drain or winterize your swim spa.

Cleaning Your Swim Spa

Swim Spa Cover and Pillows

Due to the constant punishment your swim spa cover and pillows receive, you should protect them by applying a vinyl and leather cleaner as part of your monthly maintenance plan. Use a product that is specifically designed to protect swim spa covers and pillows from chemical and ultraviolet light damage without leaving an oily residue behind that is normally associated with common automotive vinyl protectants.

Warning: *Do not* use automotive vinyl protectants on swim spa covers or pillows. These products are generally oil-based and will cause severe water clarity issues that are difficult to correct.

Swim Spa Shell

Each time you drain your swim spa, before you refill it you should clean your swim spa shell with an all-purpose cleaner and apply a coat of surface protectant.

Use a low detergent, non-abrasive cleaner specifically formulated to clean the swim spa without damaging its acrylic finish.

Use a non-oil based surface protectant that is specifically formulated to protect the swim spa's finish from the chemicals and minerals associated with normal swim spa use.

Using the Bluetooth Sound System

The sound system is ready to pair when it is not already connected to another device. To pair your device , first make sure you are close enough to the system, and that it is turned on.

1. Open the Bluetooth settings on your device. The location of the settings will depend on the device you are using.
2. In these settings, turn Bluetooth on, if it is not already.
3. Choose "**JOYONWAY / Gecko in.stream / BBA swim spa Music**" from the list of available devices.
4. When prompted, enter **2288 / 5555 / 6000** as the password. Your device should now be paired with the system, and ready to use.

Once the pairing is done and connection has been established between the devices, the system will be ready to start playing the selected audio.If the device moves out of range and loses connection it should reconnect automatically as soon as it is close enough. This should happen without going through the menu again.

Brand	Bluetooth name	Password
JOYONWAY	joyonway	2288
GECKO	instream2	5555
BALBOA	BBA swim spa Music	6000

This section is intended for new swim spa owners with no experience with water chemistry. Everyone’s experience with maintaining water quality is different, but there are some general concepts you need to know.

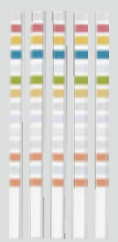
Water maintenance is not difficult, although it requires regular attention. The most important thing to understand about taking care of your swim spa water is that preventive action is much easier than correcting water quality issues.

Before you begin, we recommend you become familiar with some water quality terms and their definitions.

Whether you’re filling your swim spa for the first time (see page 7) or refilling it after draining it for regular maintenance (see page 15), start and maintain your swim spa water by following the plan we describe in this section.

① Chemical Balance

You will need to test and adjust the chemical balance of your swim spa water. Although this is not difficult, it needs to be done regularly.
You need to test the level of calcium hardness, total alkalinity, and pH.
Swim Spa owners with a bromine generator also need to check



② Sanitation and Shock

Sanitizers kill bacteria and viruses and keep the water clean. A low sanitizer level will allow microbes to grow quickly in the swim spa water. We recommend using either chlorine or bromine as your sanitizer.
You also need to add shock to the water to stimulate the chemical sanitizer. How much you use and how often depend on frequency and intensity of use.



③ Filtration

Cleaning your filter regularly is the easiest and most effective single thing you can do to keep your water clear.
A clogged or dirty filter will cause the heater and pump to work harder than they need to, possibly causing them to fail.
The swim spa’s heating system will only function with the proper amount of water flow through the system.



④ Regularity

Clear water requires regular maintenance. Establish a routine based on a regular schedule for your swim spa water maintenance.

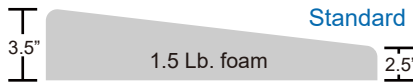


Maintaining your water quality helps the enjoyment of your swim spa and extends your swim spa’s life by preventing damage from neglect and chemical abuse.

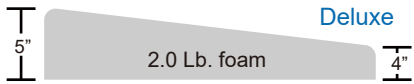
Covers

All swim spa covers are designed with a tapered height, angling downward from the center to the sides to drive off rain and prevent water from pooling. The covers listed below are filled with either 1.5 lb or 2.0 lb foam.

Standard
3.5" - 2.5" / 88mm - 64mm
1.5 Lb. foam



Deluxe
5" - 4" / 125mm - 100mm
2.0 Lb. foam



Basic Troubleshooting

The troubleshooting guidance provided here is intended to cover the most common problems a swim spa owner may encounter.

Symptom	Possible Solutions
Problems starting up	
Pump won't prime	See priming instructions on page 10.
Breaker keeps shutting off	Reset the GFCI breaker. If this continues, contact your dealer or a qualified swim spa technician.
Power and system problems	
System won't start up or breaker keeps shutting off	Power may be shut off. Turn on GFCI circuit breaker. If this continues, contact your dealer or a qualified swim spa technician.
Control panel doesn't respond	Turn on or reset the GFCI circuit breaker. If this does not solve the problem, contact your dealer or a qualified swim spa technician. If you hear the pump running but the control panel doesn't respond, contact your dealer.
Swim Spa does not turn off	Swim Spa may be trying to heat up. Check if swim spa is in Ready or Rest mode. In cold climates, if swim spa is not equipped with full foam or any kind of insulation, it will try to maintain the set temperature. Set the swim spa to low temperature range and set the temperature to 80°F. Swim Spa may be in filter cycle. If it is, this is normal and no adjustment is necessary.
Message on the control panel	There may be a problem. Please scan the QR code on page 11 for instructions.

Symptom	Possible Solutions
Heat problems	
Swim Spa water does not get hot	<p>Swim Spa may be in low temperature range. Set the swim spa to high temperature range.</p> <p>The filter may be dirty or may need to be replaced. Clean or replace the filter.</p> <p>The water level may be too low. Fill the swim spa with water level at 4 to 6 inches from the top.</p> <p>The temperature is not turned up high enough. Raise temperature on topside control.</p> <p>Cover the swim spa. The cover will keep heat in the swim spa and help keep heat from escaping. Make sure cover is on at all times when swim spa is not in use.</p> <p>The heater element may be old, deteriorated, coated with scale, or defective. Contact your dealer for more assistance.</p> <p>The gate valves may be partially or completely closed. NEVER OPERATE YOUR SWIM SPA WITH THE GATE VALVES CLOSED!</p>
Swim Spa overheats - temperature greater than 110°F / 43°C	<p>Overheating can occur during summer months and may not necessarily indicate a malfunction. When it occurs, a message code may also appear on the control panel.</p> <p>Temperature may be set too high. Turn the set temperature down to a lower temperature.</p> <p>Filtration time may be too long. Turn the filtration cycles down during the warm months.</p> <p>The swim spa may not be properly ventilated. Make sure the front of the swim spa is not blocked to allow air flow.</p> <p>High speed pumps may have been running too long. Limit pump running time to no more than 15 to 30 minutes.</p>

Symptom	Possible Solutions
Water pressure problems	
Low water pressure	<p>Jet valves may be partially or fully closed. Open the jet valves.</p> <p>Filter cartridge may be dirty. Clean or replace the filter.</p> <p>Pump may have airlock. Remove airlock by priming swim spa (page 10)</p> <p>The suction fittings may be blocked. Remove any debris that may be blocking them.</p> <p>The filter skimmer may be blocked. Remove the blockage.</p> <p>Gate valves may be closed. Open gate valves. Note: Never operate your swim spa with the gate valves closed!</p> <p>Swim Spa may be running in filtration mode. Press JETS or JETS 1 button to turn on high speed pump.</p>
No water pressure (no water stream from any jets)	<p>Power may be switched off. Turn the power back on.</p> <p>The pump may be defective. After you have tried all other troubleshooting, contact your dealer for assistance.</p>
Jets surge on and off	Water level may be too low. Add water to normal level.
Pump problems	
Pump runs constantly – will not shut off	There may be a problem with circuit board. Contact your dealer
Noisy pump	<p>The water level may be too low. Fill the swim spa with water level at 4 to 6 inches from the top.</p> <p>Filter cartridge may be dirty. Clean or replace the filter.</p> <p>Pump may have airlock. Remove airlock by priming swim spa (page 10)</p> <p>The suction fittings may be blocked. Remove any debris that may be blocking the suction fittings.</p> <p>Gate valves may be closed. Open gate valves. Note: Never operate your swim spa with the gate valves closed!</p> <p>Air may be leaking into the suction line. Contact your dealer for assistance.</p> <p>Debris may be inside the pump. Contact your dealer for assistance.</p> <p>Noise may be a sign of damage. Contact your dealer for service.</p>

Symptom	Possible Solutions
Pump turns off during operation	Automatic timer may have completed its cycle. Press JETS or JETS 1 button to start the cycle again. Pump may have overheated due to the vents on the equipment door being blocked. Make sure the front of the swim spa is not blocked to allow air flow. The pump motor may be defective. Contact your dealer for assistance.
Pump has a burning smell while running	A burning smell may be a sign of damage. Contact your dealer for service.
Pump does not run	Pump may have over heated. Let it cool for an hour and try operating the swim spa for a shorter time. Power to the swim spa may be shut off. Turn on or reset the GFCI circuit breaker. If this does not solve the problem, contact your dealer or a qualified swim spa technician.

LIMITED WARRANTY

Five Years on Swim Spa Shell Structure:
The swim spa shell structure is warranted against water loss due to defects in materials or workmanship for five (5) years from the original date of delivery.

Five Years on Swim Spa Shell Surface:
The acrylic swim spa shell is warranted against cracking, blistering or delaminating due to defects in materials or workmanship for five (5) years from the original date of delivery. Surface checking is not included.

Two Years on Swim Spa Plumbing:
Swim Spa fittings and plumbing are warranted against leaks due to defects in materials or workmanship for 2 years from the original date of delivery.

Two Years on Standard Swim Spa Equipment - Electronic Swim Spa Control Systems, Jet Pump(s),Circulation Pump and Heater:
The swim spa equipment systems are warranted against failure due to defects in materials or workmanship for two years from the date of delivery.

One Year on Ozone Generator:
The ozone generator is warranted against failure due to defects in materials or workmanship for one year from the original date of delivery.

One Year on Blower:
The blower is warranted against failure due to defects in materials or workman ship for one year from the original date of delivery.

One Year on Audio and Video System Components:
The factory installed audio and video components (i.e. power supply, stereo topside, IR sensor, cables, wires, etc.) are warranted against failure due to defects in materials or workmanship for one (1) year from the original date of delivery.

One Year on L.E.D.'s:
The factory installed L.E.D.'s are warranted against failure due to defects in materials or workmanship for one (1) year from the original date of delivery.

One Year on Swim Spa Cabinet:
The swim spa cabinet is warranted to be free of defects in materials or workmanship for one year from the original date of delivery. Normal wear or appearance is not included. This warranty does not include damage caused in delivery, variations in color, wear or appearance,as all wood reacts differently to environmental conditions.

Ninety Days on Swim Spa Pillows and Filter Box:
Pillows and filter box are subject to water chemistry variation and are warranted for ninety (90) days from the original date of delivery.

Swim Spa Covers:
Swim Spa covers are warranted to be free of defects in materials and workmanship for a period of two (2) years on vinyl and one (1) year on foam core.

Swim Spa Accessories:

The swim spa accessories are warranted by the accessory manufacturer and are specifically excluded. Please see the respective product manufacturer's warranty for details.

In-field labor shall be covered by dealers.

Limited Warranty should be read in conjunction with Warranty Performance.